



Installing FAD TOOLS.

To install FAD TOOLS, follow these steps:

- Check that either access (see Figure 1) or the access runtime library (see Figure 2) is installed properly. If it is not installed, then download the installer and the instructions from this [link](#).
- Run the Setup.exe file in the same folder as this file consistent with the architecture of office installed in the computer (e.g., 32 or 64 bits).

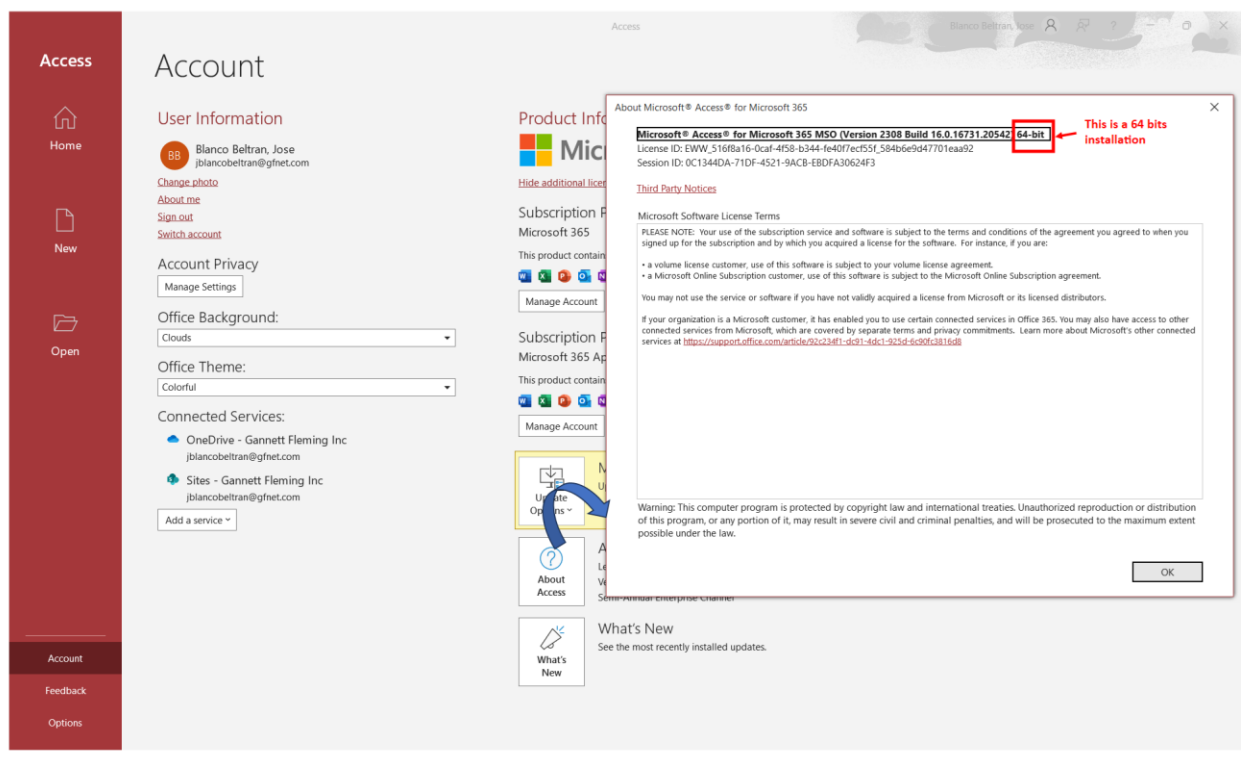


Figure 1. Office's architecture based on Access installed in the computer.



FADTOOLS

INTERNATIONAL

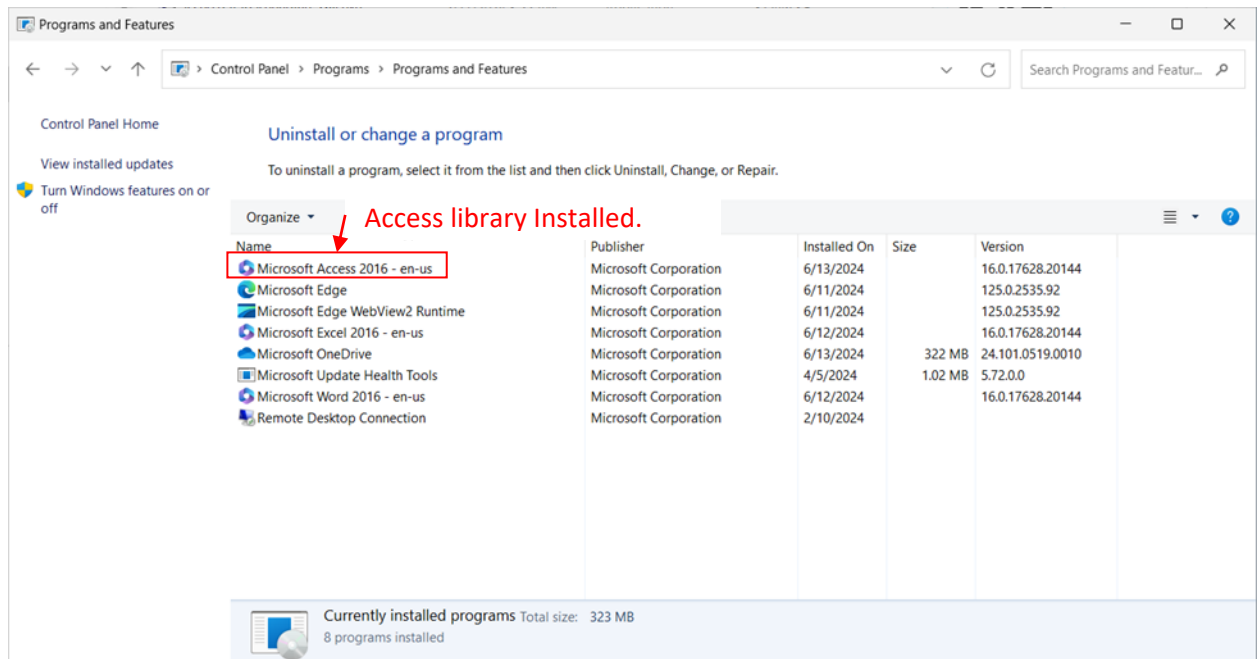


Figure 2 Checking that the Access Runtime Library is installed.

Troubleshooting installation

If Access Database runtime library is not installed or it doesn't match the FAD TOOLS architecture, FAD will issue the warning shown in Figure 3, and it will write the message shown in the Figure 4 in the FAD.log file.

If this happens, repeat the installation process ensuring that the access library is installed properly and that it matches the FAD TOOLS architecture.

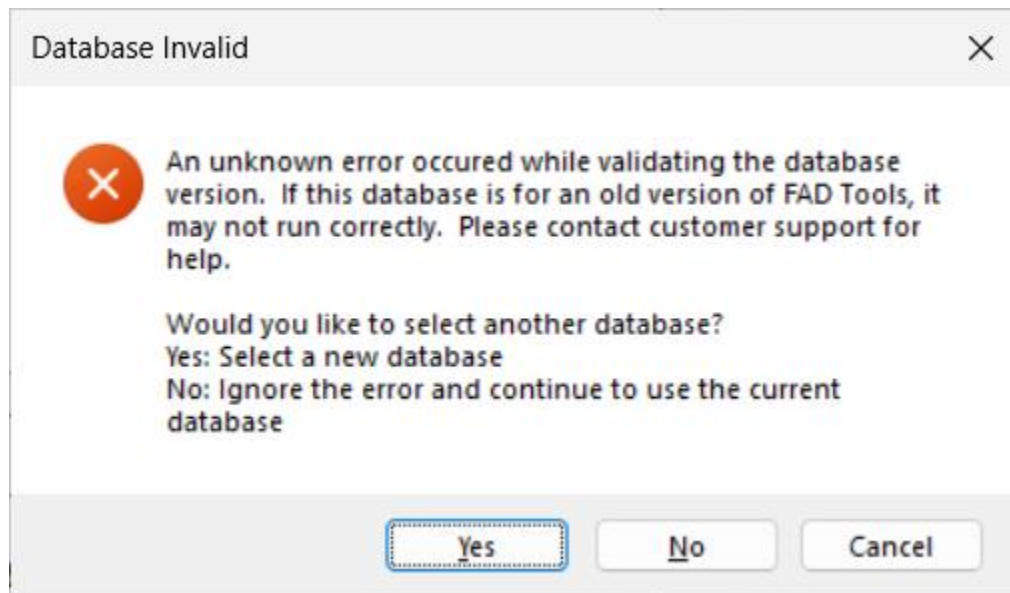


Figure 3. Error message from FAD when you try to open a FAD database (e.g., #.fadt).

```

2024-06-14 04:23:24.9915|TRACE|FAD.frmVersionSelection|License MFAD is activated : True
2024-06-14 04:23:25.0070|TRACE|FAD.CToolControl|Error : 9102 in Tool: HFAD
2024-06-14 04:23:25.0070|TRACE|FAD.CToolControl|Error : Tool HFAD not valid.
2024-06-14 04:23:25.0070|INFO|FAD.CToolControl|Software License ID: 1500000120 activated.
2024-06-14 04:23:25.0070|TRACE|FAD.frmVersionSelection|License HFAD is activated : True
2024-06-14 04:23:25.0070|INFO|FAD.CToolControl|Software License ID: 1500000113 activated.
2024-06-14 04:23:25.0070|TRACE|FAD.frmVersionSelection|License TFAD is activated : True
2024-06-14 04:23:26.3198|INFO|FAD.frmVersionSelection|User selected MFAD tool
2024-06-14 04:23:27.5853|TRACE|com.softwarekey.Client.Sample.SampleLicense|Failed to Refresh. Error : No error.
2024-06-14 04:23:27.5853|ERROR|com.softwarekey.Client.Sample.SampleLicense|Error Refreshing. Tool HFADError Number :5016. Description : Dea
2024-06-14 04:23:27.5853|TRACE|FAD.CToolControl|Logging in to Tool: (HFAD
2024-06-14 04:23:27.5853|TRACE|FAD.CToolControl|First SoftwareKey log in Error: (9102) The web service returned an error. Web Service Error
2024-06-14 04:23:29.5069|TRACE|FAD.frmMain|Excel is installed
2024-06-14 04:23:31.6831|TRACE|FAD.frmMain|Word is installed
2024-06-14 04:23:32.0909|INFO|FAD.frmMain|Searching database in :C:\Users\jblancobeltran\Downloads\ControllingLoadCaseExample.fadt
2024-06-14 04:23:35.8978|INFO|FAD.frmMain|Opening database from user: C:\Users\jblancobeltran\Downloads\ControllingLoadCaseExample.fadt
2024-06-14 04:23:35.8978|INFO|FAD.frmMain|Opening existing database: C:\Users\jblancobeltran\Downloads\ControllingLoadCaseExample.fadt
2024-06-14 04:23:36.0857|ERROR|FAD.frmMain|System.InvalidOperationException: The 'Microsoft.ACE.OLEDB.16.0' provider is not registered on th
    at System.Data.OleDb.OleDbServicesWrapper.GetDataSource(OleDbConnectionString constr, DataSourceWrapper& datasrcWrapper)
    at System.Data.OleDb.OleDbConnectionInternal..ctor(OleDbConnectionString constr, OleDbConnection connection)
    at System.Data.OleDb.OleDbConnectionFactory.CreateConnection(DbConnectionOptions options, DbConnectionPoolKey poolKey, Object poolGroupP
    at System.Data.ProviderBase.DbConnectionFactory.CreateNonPooledConnection(DbConnection owningConnection, DbConnectionPoolGroup poolGroup
    at System.Data.ProviderBase.DbConnectionFactory.TryGetConnection(DbConnection owningConnection, TaskCompletionSource`1 retry, DbConnecti
    at System.Data.ProviderBase.DbConnectionInternal.TryOpenConnectionInternal(DbConnection outerConnection, DbConnectionFactory connectionF
    at System.Data.ProviderBase.DbConnectionInternal.OpenConnection(DbConnection outerConnection, DbConnectionFactory connectionFactory)
    at System.Data.OleDb.OleDbConnection.Open()
    at FAD.CDatabase.Open()
    at FAD.frmMain.OpenDatabase(String path)
2024-06-14 04:28:58.8125|TRACE|FAD.frmMain|Excel is installed
2024-06-14 04:29:00.9755|TRACE|FAD.frmMain|Word is installed
2024-06-14 04:29:09.6176|ERROR|FAD.CDatabase|System.InvalidOperationException: ExecuteNonQuery requires an open and available Connection. T

```

Figure 4. Error message written in the FAD.log file.